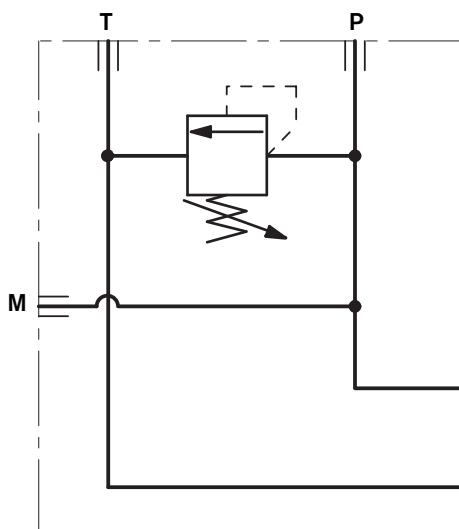


Inlet Elements with Primary Pressure Relief Valve

TE-01-__-



HYDRAULIC - SYMBOL



Description

The inlet elements TE-01-__ are employed to connect the external P and T lines to the P and T channels inside the ED elements of the Directional Valve Assembly. They incorporate a pressure relief cartridge which limits the maximum primary pressure in the P line and unloads to Tank any excess flow. The relief setting can be checked through the Test Point M.

The TE-01-__ inlet elements are available in two versions:

- Body made of Black Anodized Aluminium (Al), or
 - Body made of Yellow Zinc plated (Cr+3) Cast Iron (CI).
- Port sizes can be G 3/8, G 1/2 or SAE 8 (3/4" 16 UNF).

Technical Data (for applications outside these parameters, please consult us)

General

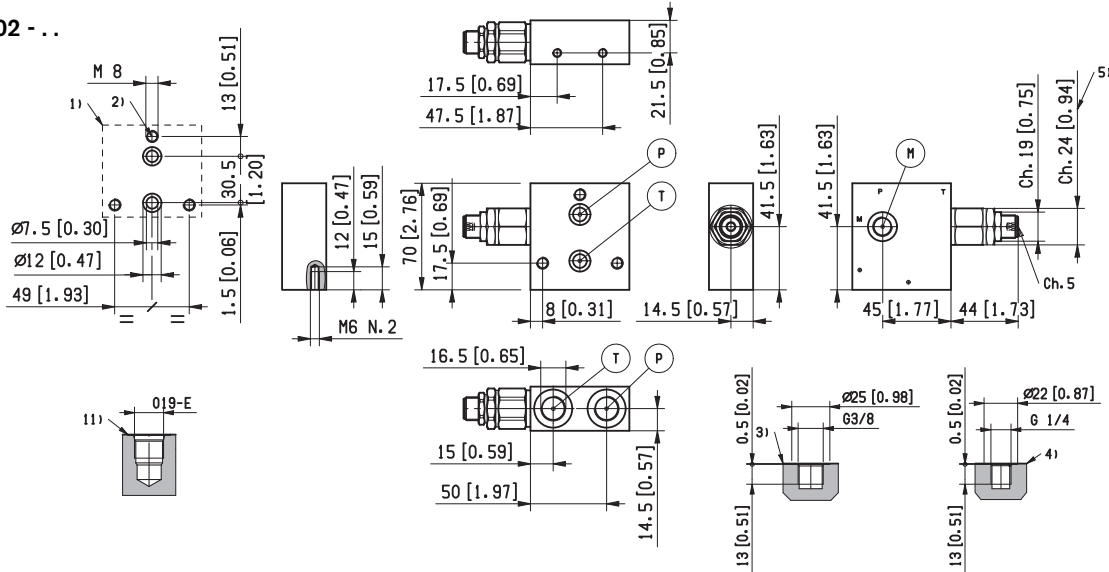
Inlet Element Type	Weight	AL Version (Aluminium)	CI Version (Cast Iron)
TE-01-02-00-	kg [lbs]	0.31 [0.67]	Not Available
TE-01-03-00-	kg [lbs]	0.49 [1.08]	1.23 [2.72]
TE-01-56-00-	kg [lbs]	0.49 [1.08]	Not Available
TE-01-02-S_-	kg [lbs]	0.44 [0.96]	Not Available
TE-01-03-S_-	kg [lbs]	0.66 [1.45]	1.36 [3.00]
TE-01-56-S_-	kg [lbs]	0.66 [1.45]	Not Available
Ambient Temperature	°C [°F]	-20....+50 [-4....+120]	

Hydraulic

Maximum pressure for aluminium version	bar [psi]	250 [3625]
Maximum pressure for Cast Iron version	bar [psi]	310 [4500]
Maximum inlet flow	l/min [gpm]	50 [13.2]
Hydraulic fluid		Mineral oil based hydraulic fluids HL (DIN 51524 part 1). Mineral oil based hydraulic fluids HLP (DIN 51524 part 2). For use of environmentally acceptable fluids (vegetable or polyglycol base) please consult us.
General properties: it must have physical lubricating and chemical properties suitable for use in hydraulic systems such as, for example:		
Fluid Temperature	°C [°F]	-20....+80 [-4....+176] (NBR)
Permissible degree of fluid contamination		ISO 4572: $\beta_x \geq 75$ X=10...12 ISO 4406: class 19/17/14 NAS 1638: class 8
Viscosity range	mm ² /s	5....420

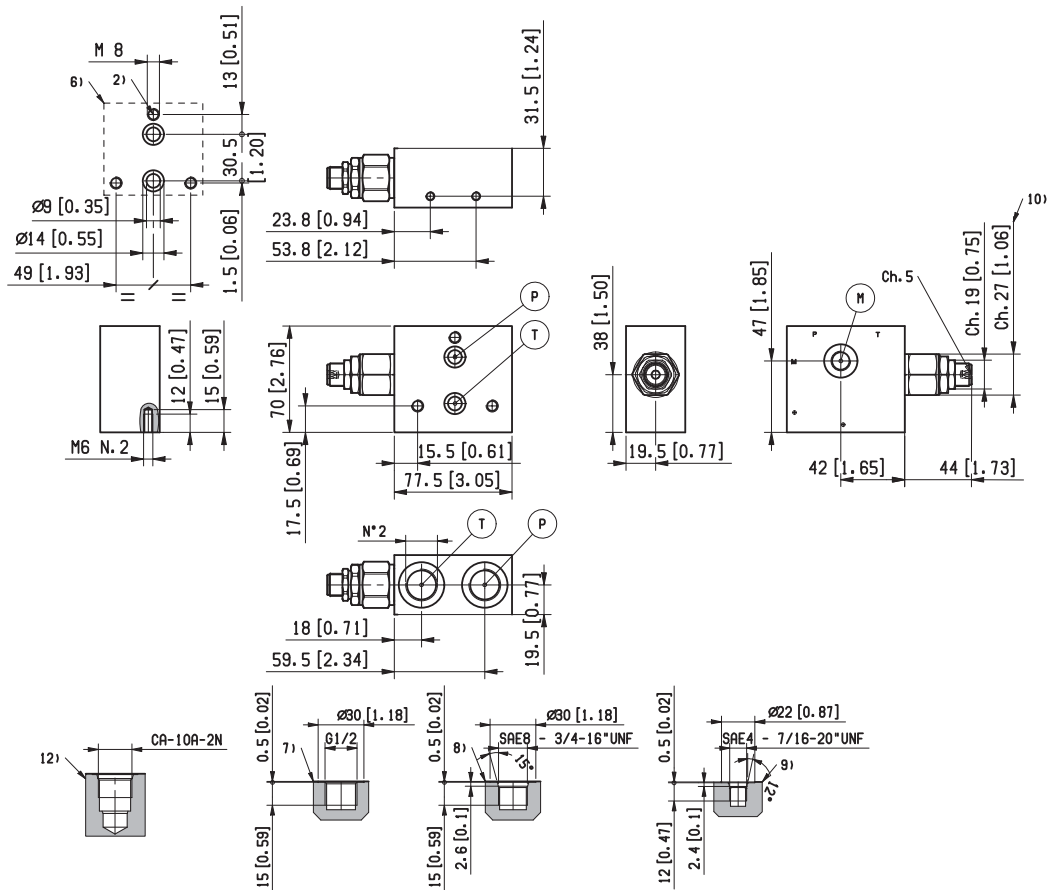
External Dimensions and Fittings

TE - 01 - 02 - . .



TE - 01 - 03 - . .

TE - 01 - 56 - . .



1 Flange specifications for coupling to the ED Directional Valve Elements (for Version TE-01-02...).

2 For tie rod and tightening torque information see data sheet RE 18301-90.

3 Hydraulic Ports P-T G 3/8, for Inlet Elements TE-01-02...

4 Test Point port (M) G 1/4, for Inlet Elements TE-01-02... and TE-01-03...

5 Primary Pressure Relief Cartridge VMD1025, with screw type adjuster (refer to RE 18301-91).

6 Flange specifications for fitting of the ED Directional Valve Elements. (Versions TE-01-03... and TE-01-56...).

7 Hydraulic Ports P-T G 1/2, for versions TE-01-03-...

8 Hydraulic Ports P-T SAE 8, for versions TE-01-56-...

9 Test Point port SAE 4, for versions TE-01-56-...

10 Primary Pressure Relief Cartridge VMD1040, with screw type adjuster (refer to RE 18301-91).

11 Cavity for Primary Pressure Relief VMD1025.

12 Cavity for Primary Pressure Relief VMD1040.

Ordering Details

		TE	-	01	-	-	-	-	-		
Family Inlet Elements										CI = AL =	Material Cast Iron * Aluminium
Configuration With Primary Pressure Relief Valve											Primary Pressure Relief range 00 = Cavity without primary pressure relief valve (to be ordered separately) SN = Pressure range 25-120bar [362-1740 psi] SB = Pressure range 40-200bar [580-2900 psi] SV = Pressure range 200-350bar [2900-5076 psi]
Ports G 3/8 DIN 3852 G 1/2 DIN 3852 3/4-16 UNF-2B (SAE8)											=02 =03 =56

* Only available for versions with G 1/2 ports (TE-01-03-...)

