

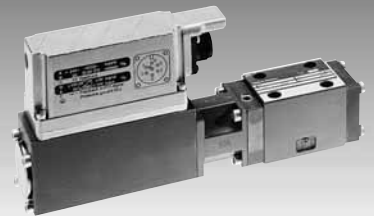
Proportional pressure reducing valve, pilot operated, with on-board elec- tronics (OBE) and position feedback

RE 29195/05.06
Replaces: 07.05

1/10

Type DREBE6X

Nominal size (NG) 6
Unit series 1X
Maximum working pressure P 315 bar, T 250 bar
Maximum flow rate 40 l/min



List of Contents

Contents	Page
Features	1
Ordering data	2
Preferred types, symbol	2
Function, sectional diagram	3
Technical data	4 to 6
On-board trigger electronics	7 and 8
Characteristic curves	9
Unit dimensions	10

Features

- Pilot operated valves with position feedback and on-board electronics for reducing system pressure in the consumer (pilot oil internal only)
- 3-way version (P-A/A-T), $p_{\min} = p_T$
- Adjustable through the position of the armature against the compression spring
- Position-controlled, minimal hysteresis < 1 %, rapid response times, see Technical data
- Pressure limitation to a safe level even with faulty electronics (solenoid current $I > I_{\max}$)
- For subplate attachment, mounting hole configuration to ISO 4401-03-02-0-05. Subplates as per catalog sheet RE 45053 (order separately)
- Plug-in connector to DIN 43563-AM6, see catalog sheet RE 08008 (order separately)
- Data for the on-board trigger electronics
 - Complies with CE, EMC directives EN 61000-6-2: 2002-08 and EN 61000-6-3: 2002-08
 - $U_B = 24 V_{\text{nom}}$ DC
 - Electrical connection 6P+PE
 - Signal actuation
 - Standard 0...+ 10 V (A1)
 - Version 4...20 mA (F1)
 - Valve curve calibrated at the factory

Ordering data

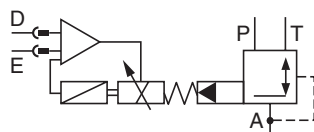
DREB	E	6	X-1X/	M	G24	K31		M	*
Proportional 3-way pressure reducing valve with inductive position transducer, pilot operated			Further information in plain text						
With on-board electronics = E			M = NBR seals, suitable for mineral oils (HL, HLP) to DIN 51524						
Nominal size = 6			Interface for trigger electronics						
Mounting hole configuration to ISO 4401-03-02-0-05 = X			A1 = Setpoint input 0...+10 V						
Unit series 10 to 19 (10 to 19: installation and connection dimensions unchanged) = 1X			F1 = Setpoint input 4...20 mA						
Max. pressure stage			K31 = Electrical connection without plug-in connector, with unit plug to DIN 43563-AM6 Order plug-in connector separately						
up to 75 bar = 75									
up to 175 bar = 175									
up to 310 bar = 310									
Without non-return valve = M									
Voltage supply of trigger electronics 24 V DC = G24									

Preferred types

Type....A1 (0...+10 V)	Material Number	Type....F1 (4...20 mA)	Material Number
DREBE6X-1X/75MG24K31A1M	0 811 402 082	DREBE6X-1X/175MG24K31F1M	0 811 402 083
DREBE6X-1X/175MG24K31A1M	0 811 402 080	DREBE6X-1X/310MG24K31F1M	0 811 402 085
DREBE6X-1X/310MG24K31A1M	0 811 402 081		

Symbol


For on-board electronics



Function, sectional diagram

General

Type DREBE6X proportional pressure reducing valves are pilot operated with a 3-way main stage. The pilot valve (pressure relief valve pilot stage) is supplied internally with a controlled flow of pilot oil via P. The valves are actuated by means of a position-controlled proportional solenoid with on-board electronics. With these valves, the pressure in A (consumer) can be infinitely adjusted and reduced in relation to the setpoint.

 EN 61000-6-2: 2002-08
EN 61000-6-3: 2002-08

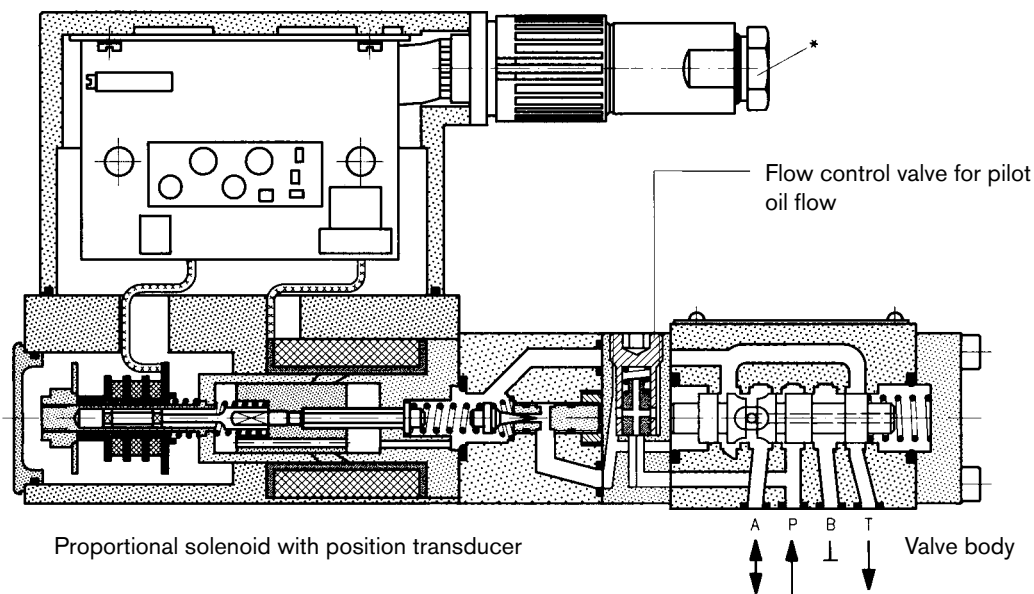
Basic principle

To adjust the system pressure in A, a setpoint is set in the trigger electronics. Based on this setpoint, the electronics control the position of the solenoid against the spring force. The proportional solenoid is positioned precisely on the spring characteristic curve. The pilot stage is supplied with oil from P at a flow rate of < 0.6 l/min via a flow control valve. The pilot pressure is compared with the consumer pressure (plus spring) in A and regulated.

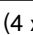

The spring results in $p_{Amin} = p$ in T.

Pressure limitation for maximum safety

If a fault occurs in the electronics, so that the solenoid current (I_{max}) would exceed its specified level in an uncontrolled manner, the pressure cannot rise above the level determined by the maximum spring force.



Accessories

Type		Material Number
(4 x)  ISO 4762-M5x30-10.9	Cheese-head bolts	2 910 151 166
* 	Plug-in connectors 6P+PE, see also RE 08008	KS
		KS
		MS
		MS
		KS 90°
	1 834 482 022	
	1 834 482 026	
	1 834 482 023	
	1 834 482 024	
	1 834 484 252	

Testing and service equipment

Test box type VT-PE-TB3, see RE 30065
Measuring adapter 6P+PE type VT-PA-2, see RE 30068


Technical data

General		
Construction	Pilot stage	Poppet valve
	Main stage	Spool valve
Actuation		Proportional solenoid with position control and OBE
Connection type		Subplate, mounting hole configuration NG6 (ISO 4401-03-02-0-05)
Mounting position		Optional
Ambient temperature range	°C	-20...+50
Weight	kg	3.3
Vibration resistance, test condition		Max. 25 g, shaken in 3 dimensions (24 h)

Hydraulic (measured with HLP 46, $\vartheta_{oil} = 40\text{ °C} \pm 5\text{ °C}$)

Pressure fluid		Hydraulic oil to DIN 51524...535, other fluids after prior consultation		
Viscosity range	recommended mm ² /s	20...100		
	max. permitted mm ² /s	10...800		
Pressure fluid temperature range	°C	-20...+70		
Maximum permitted degree of contamination of pressure fluid Purity class to ISO 4406 (c)		Class 18/16/13 ¹⁾		
Direction of flow		See symbol		
Max. set pressure in A (at $Q_{min} = 1\text{ l/min}$)	bar	75	175	310
Minimum pressure in A	bar	0 (relative) or pressure in T		
Min. inlet pressure in P	bar	$p_P = p_A + \geq 5$		
Max. working pressure	bar	Port P: 315		
Max. pressure	bar	Port T: 250 (B sealed)		
Internal pilot oil flow	l/min	approx. 0.6 (with closed-loop control)		
Max. flow	l/min	40		

Static/Dynamic

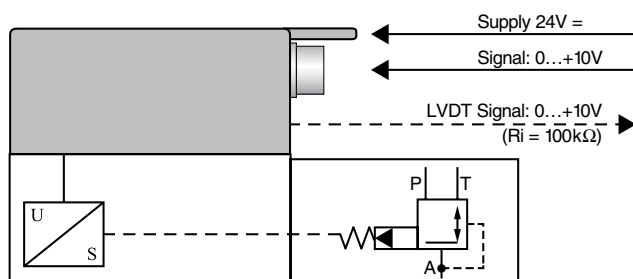
Hysteresis	%	≤ 1 of max. set pressure		
Manufacturing tolerance	%	$\leq \pm 5$ of max. set pressure		
Response time	100% signal change	ms	50	
	10% signal change	ms	20	
Thermal drift	<1% at $\Delta T = 40\text{ °C}$			
Conformity	 EN 61000-6-2: 2002-08 EN 61000-6-3: 2002-08			

¹⁾ The purity classes stated for the components must be complied with in hydraulic systems. Effective filtration prevents problems and also extends the service life of components. For a selection of filters, see catalog sheets RE 50070, RE 50076 and RE 50081.

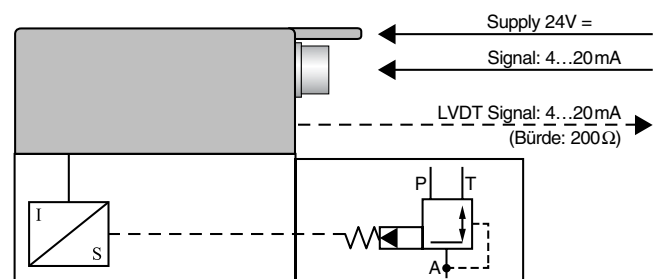
Technical data

Electrical, trigger electronics integrated in valve		
Cyclic duration factor	%	100
Degree of protection		IP 65 to DIN 40050 and IEC 14434/5
Connection		Plug-in connector 6P+PE, DIN 43563
Supply voltage		24 V DC _{nom}
Terminal A:		Min. 21 V DC/max. 40 V DC
Terminal B: 0 V		Ripple max. 2 V DC
Power consumption		Solenoid \square 45 mm = 40 VA max.
External fuse		2.5 A _F
Input, "standard" version	A1	Differential amplifier, $R_i = 100 \text{ k}\Omega$
Terminal D: U_E		0...+10 V
Terminal E:		0 V
Input, "mA signal" version	F1	Burden, $R_{sh} = 200 \Omega$
Terminal D: I_{D-E}		4...20 mA
Terminal E: I_{D-E}		Current loop I_{D-E} feedback
Max. voltage to differential inputs over 0 V		$D \rightarrow B$ } max. 18 V DC $E \rightarrow B$ }
Test signal, "standard" version	A1	LVDT
Terminal F: U_{test}		0...+10 V
Terminal C:		Reference 0 V
Test signal, "mA signal" version	F1	LVDT signal 4...20 mA at external load 200...500 Ω max.
Terminal F: I_{F-C}		4...20 mA output
Terminal C: I_{F-C}		Current loop I_{F-C} feedback
Safety earth conductor and shield		See pin assignment (installation in conformity with CE)
Recommended cable		See pin assignment up to 20 m 7 x 0.75 mm ² up to 40 m 7 x 1 mm ²
Calibration		Calibrated at the factory, see valve curve

Version A1: Standard

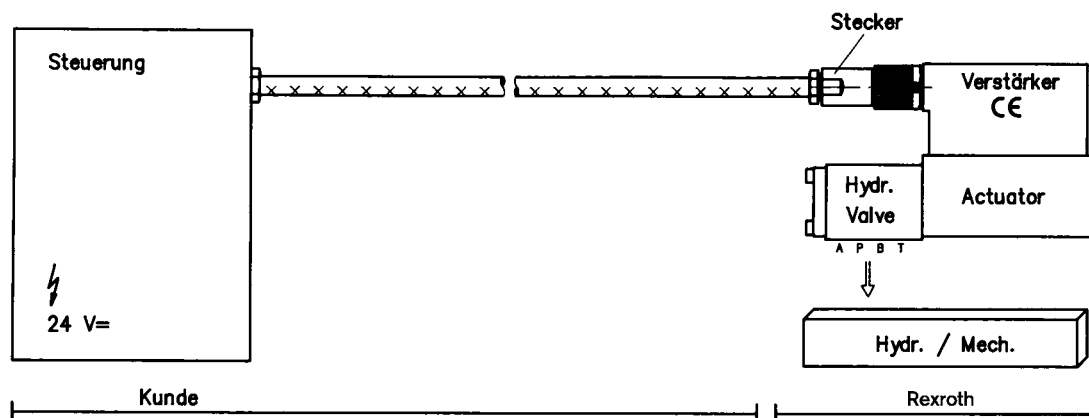


Version F1: mA signal



Connection

For electrical data, see page 5 and
Operating Instructions 1 819 929 083



Technical notes for the cable

- Version:**
- Multi-wire cable
 - Extra-finely stranded wire to VDE 0295, Class 6
 - Safety earth conductor, green/yellow
 - Cu braided shield
- Type:**
- e.g. Ölflex-FD 855 CP (from Lappkabel company)
- No. of wires:**
- Determined by type of valve, plug type and signal assignment
- Cable Ø:**
- 0.75 mm² up to 20 m long
 - 1.0 mm² up to 40 m long
- Outside Ø:**
- 9.4...11.8 mm – Pg 11
 - 12.7...13.5 mm – Pg 16

Important

Voltage supply 24 V DC nom.,
if voltage drops below 18 V DC, rapid shutdown resembling
“Enable OFF” takes place internally.

In addition, with the “mA signal” version:

$I_{D-E} \geq 3 \text{ mA}$ – valve is active

$I_{D-E} \leq 2 \text{ mA}$ – valve is deactivated.

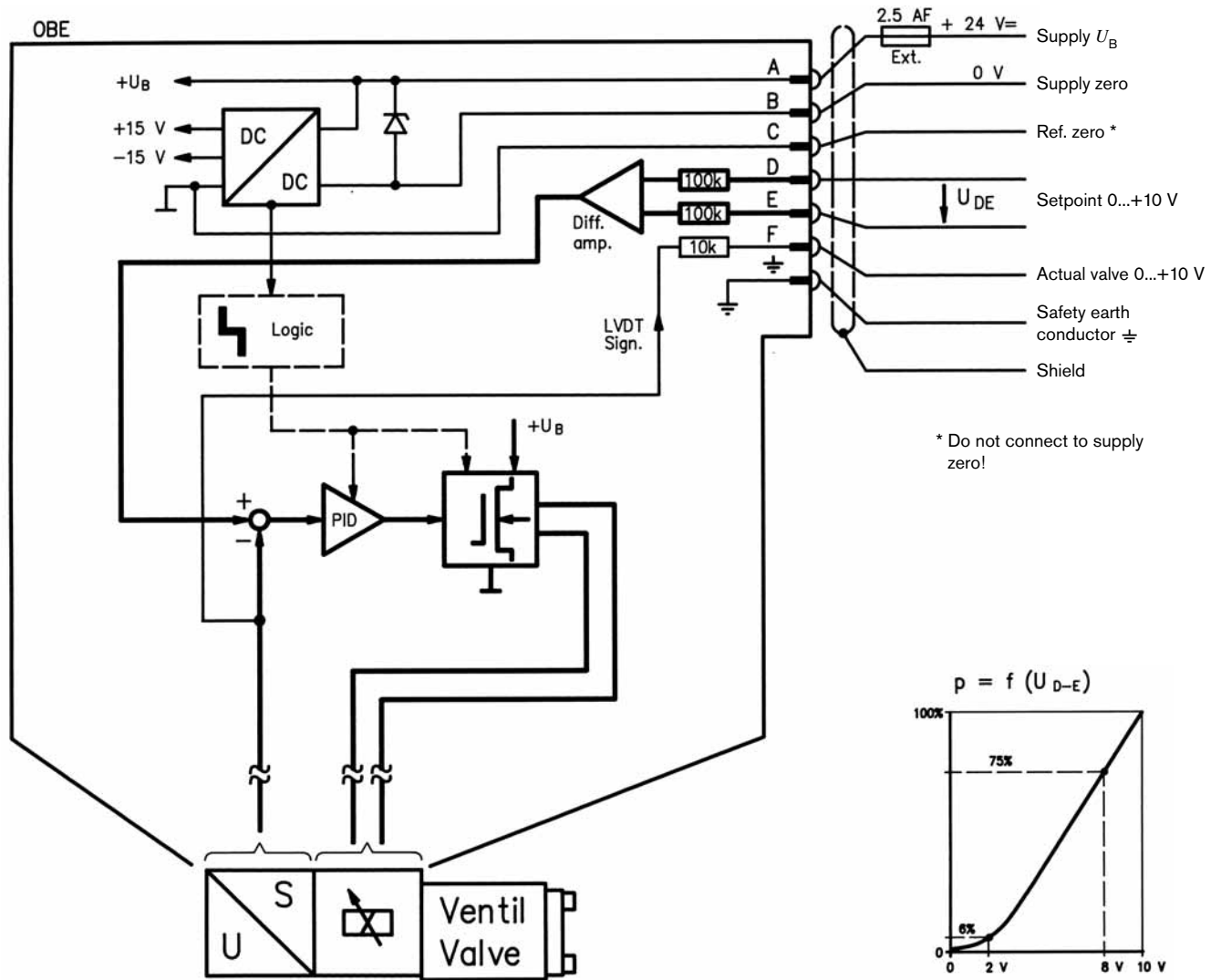
Electrical signals emitted via the trigger electronics (e.g. actual values) must not be used to shut down safety-relevant machine functions!

(See also European Standard, “Technical Safety Requirements for Fluid-Powered Systems and Components – Hydraulics”, EN 982.)

On-board trigger electronics

Circuit diagram/pin assignment

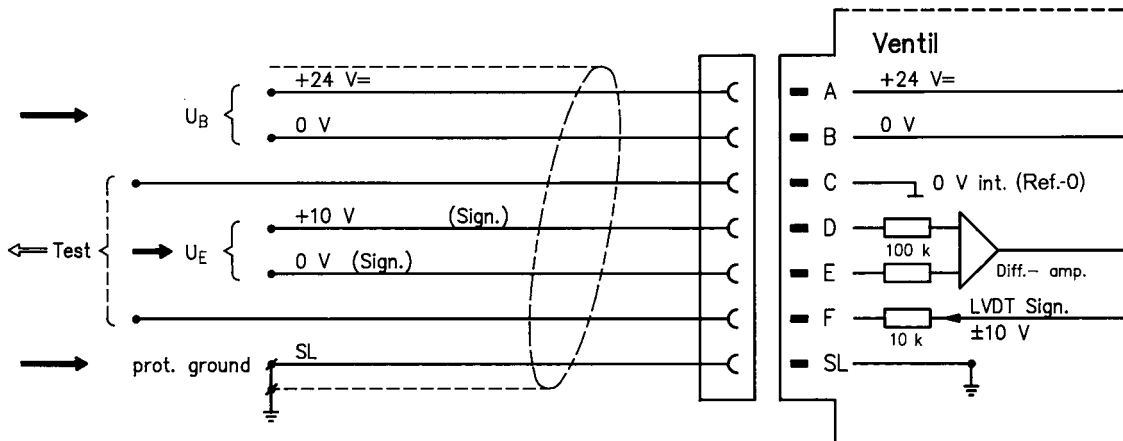
Version A1: U_{D-E} 0...+10 V



Pin assignment

Version A1: U_{D-E} 0...+10 V

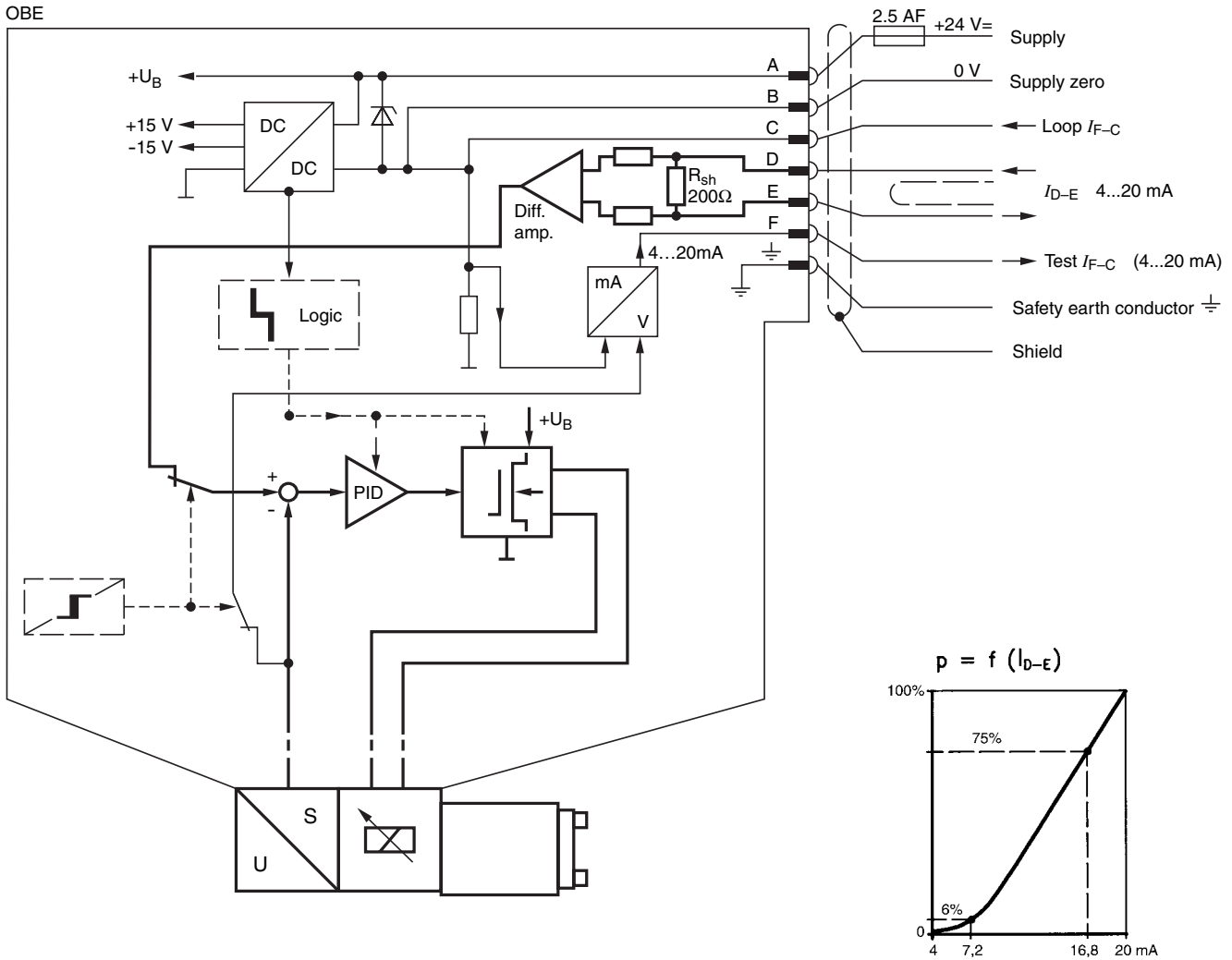
($R_i = 100\text{ k}\Omega$)



On-board trigger electronics

Circuit diagram/pin assignment

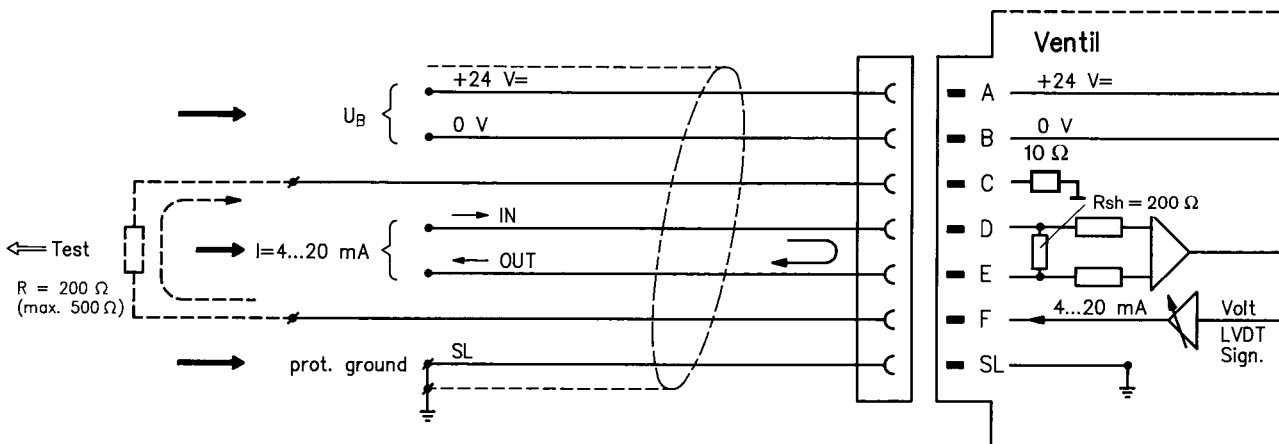
Version F1: I_{D-E} 4...20 mA



Pin assignment 6P+PE

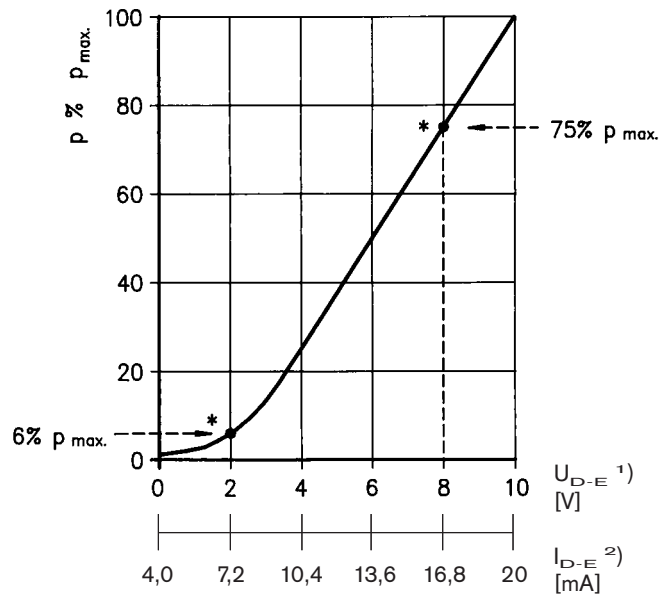
Version F1: I_{D-E} 4...20 mA

($R_{sh} = 200 \text{ k}\Omega$)



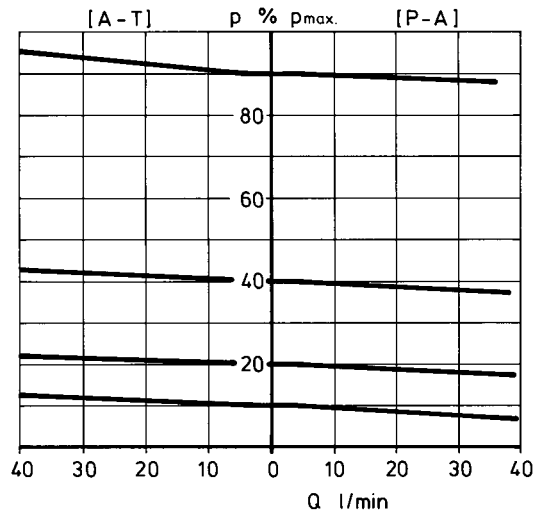
Characteristic curves (measured with HLP 46, $\vartheta_{oil} = 40^\circ\text{C} \pm 5^\circ\text{C}$)

Pressure in port A as a function of the setpoint

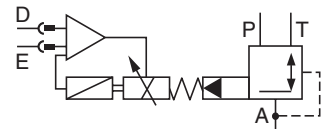


- * Factory setting at $Q = 1 \text{ l/min}$
+5% manufacturing tolerance (of max. set pressure)
- 1) Version: $U_{D-E} = 0 \dots +10 \text{ V}$
- 2) Version: $I_{D-E} = 4 \dots 20 \text{ mA}$

Pressure in port A proportionate to the maximum flow rate of the main stage



Set pressure
 $p \% p_{max} = f(Q_{P-A}/Q_{A-T})$



Notes

Bosch Rexroth AG
Hydraulics
Zum Eisengießer 1
97816 Lohr am Main, Germany
Telefon +49 (0) 93 52 / 18-0
Telefax +49 (0) 93 52 / 18-23 58
documentation@boschrexroth.de
www.boschrexroth.de

© This document, as well as the data, specifications and other information set forth in it, are the exclusive property of Bosch Rexroth AG. It may not be reproduced or given to third parties without its consent.

The data specified above only serve to describe the product. No statements concerning a certain condition or suitability for a certain application can be derived from our information. The information given does not release the user from the obligation of own judgement and verification. It must be remembered that our products are subject to a natural process of wear and aging.

Notes
